

# Spring Reverb by G. Forrest Cook

gaussmarkov and stobiepole

July 24, 2007

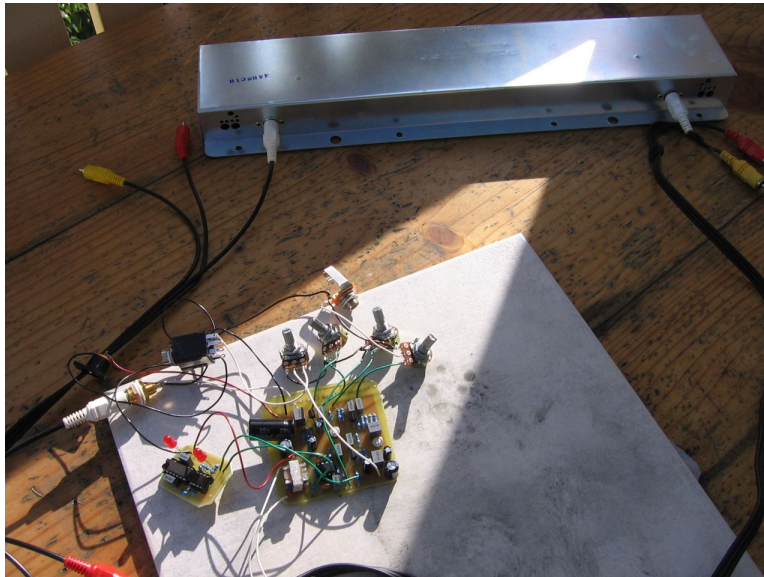
<http://gaussmarkov.net/index.php?page=layouts#springrev>

## Notes

SOURCE: <http://www.solorb.com/elect/musiccirc/reverb2/>.

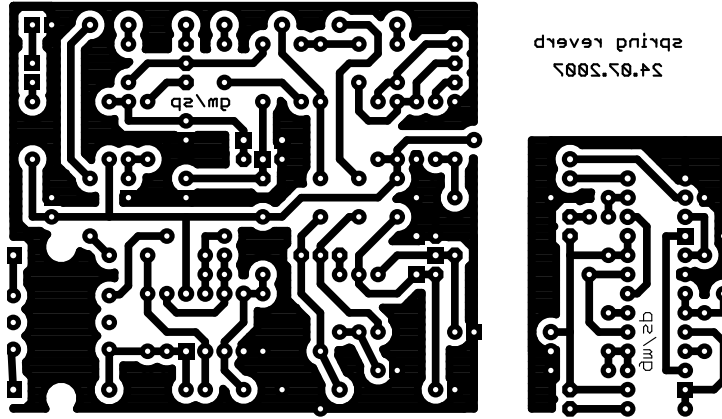
The spring reverb used in this project (XFM1 on the schematic) is the 8AB2A1B from Accutronics. The transformer is the Xicon 42TM018 available from Mouser. There are two PCBs, one for the amplifier/mixer and a daughter board for two clipping indicators. The daughter board can be positioned over the corresponding pots so that the indicators are positioned next to the knobs outside the enclosure.

## Prototype

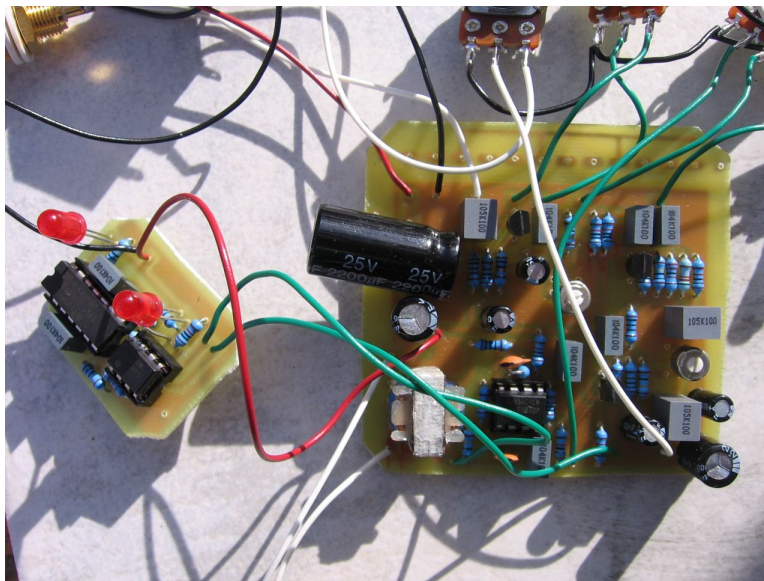


## PCB Image

When printing this image, use “Page Scaling: None” in the Adobe Reader print dialog.

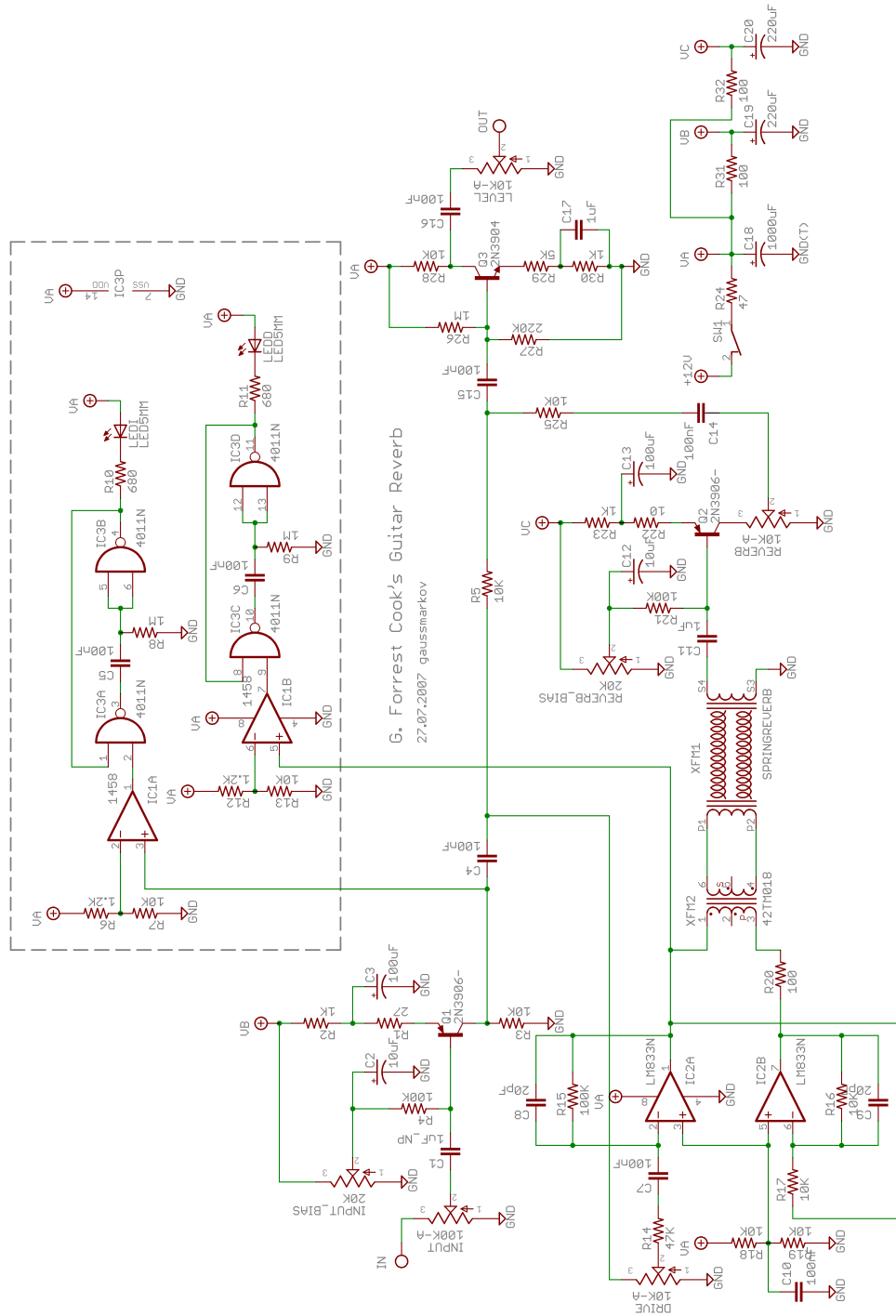


## Layout





# Schematic



# Parts

Part	Value	Library			
C1	1uF_NP	gm-caps-film-box	R1	27	gm-resistors
C2	10uF	gm-caps-electro-pol	R2	1K	gm-resistors
C3	100uF	gm-caps-electro-pol	R3	10K	gm-resistors
C4	100nF	gm-caps-film-box	R4	100K	gm-resistors
C5	100nF	gm-caps-film-box	R5	10K	gm-resistors
C6	100nF	gm-caps-film-box	R6	1.2K	gm-resistors
C7	100nF	gm-caps-film-box	R7	10K	gm-resistors
C8	20pF	gm-caps-ceramic	R8	1M	gm-resistors
C9	20pF	gm-caps-ceramic	R9	1M	gm-resistors
C10	100nF	gm-caps-film-box	R10	680	gm-resistors
C11	1uF	gm-caps-film-box	R11	680	gm-resistors
C12	10uF	gm-caps-electro-pol	R12	1.2K	gm-resistors
C13	100uF	gm-caps-electro-pol	R13	10K	gm-resistors
C14	100nF	gm-caps-film-box	R14	47K	gm-resistors
C15	100nF	gm-caps-film-box	R15	100K	gm-resistors
C16	100nF	gm-caps-film-box	R16	10K	gm-resistors
C17	1uF	gm-caps-film-box	R17	10K	gm-resistors
C18	1000uF	gm-caps-electro-pol	R18	10K	gm-resistors
C19	220uF	gm-caps-electro-pol	R19	10K	gm-resistors
C20	220uF	gm-caps-electro-pol	R20	100	gm-resistors
IC1	1458	gm-ics	R21	100K	gm-resistors
IC2	LM833N	gm-ics	R22	10	gm-resistors
IC3	4011N	gm-ics	R23	1K	gm-resistors
LEDD	LED5MM	gm-diodes	R24	47	gm-resistors
LEDI	LED5MM	gm-diodes	R25	10K	gm-resistors
Q1	2N3906-	gm-trans	R26	1M	gm-resistors
Q2	2N3906-	gm-trans	R27	220K	gm-resistors
Q3	2N3904	gm-trans	R28	10K	gm-resistors
			R29	5K	gm-resistors
			R30	1K	gm-resistors
REVERB	10K-A	gm-pots	R31	100	gm-resistors
REVERB_BIAS	20K	gm-pots	R32	100	gm-resistors
SW1	SPST	gm-switches	DRIVE	10K-A	gm-pots
XFM1	SPRINGREVERB	gm-xfms	INPUT	100K-A	gm-pots
XFM2	42TM018	gm-xfms	INPUT_BIAS	20K	gm-pots
			LEVEL	10K-A	gm-pots