

# Voodoo Lab Overdrive

gaussmarkov  
\*\* unverified \*\*

January 11, 2008

<http://gaussmarkov.net/wordpress/circuits/voodoo-lab-overdrive/>

## Notes

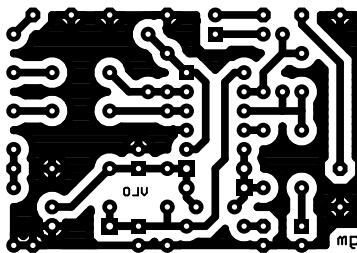
SOURCE: <http://diystompboxes.com>.

I have various reasons for putting this one together. My interest was peaked when the Voodoo Lab Overdrive was associated recently with the Fulltone OCD. I was also looking for a relatively simple circuit with op-amps that I could use for an Eagle layout tutorial that I plan to write. In addition, I have been working up my understanding of op-amps through writing a series of tutorials and the divided negative feedback tools are really useful with this circuit.

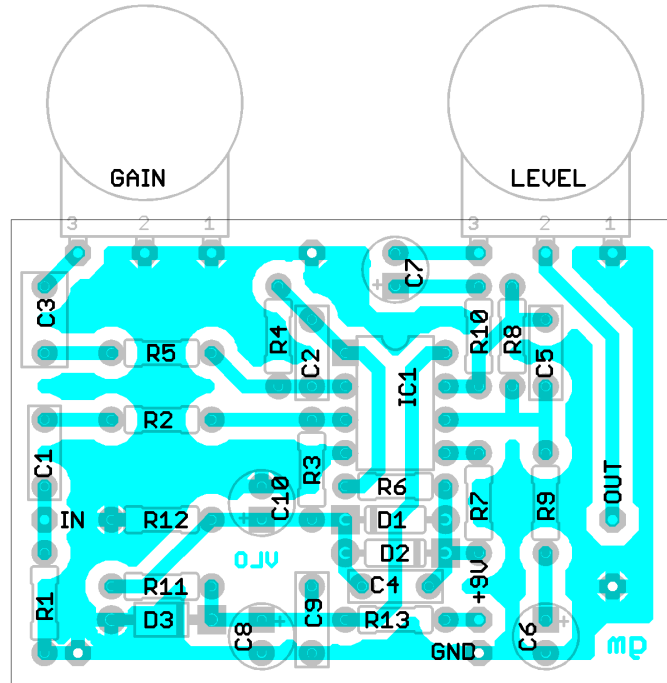
There are a bunch of mods to consider with this circuit, all of which have been applied to other stompbox circuits over the years. And if the reports are accurate, similar mods appear in the OCD as well. If you want to try mods on a breadboard, I have prepared a basic breadboard layout and posted it in the [IC-Based Overdrive](#) project on Aron's forum as [Voodoo Lab Overdrive](#). The mods are listed on my version of the schematic.

## PCB Image

When printing this image, use "Page Scaling: None" in the Adobe Reader print dialog.



# Layout



# Parts

Partlist for Voodoo Lab Overdrive on gaussmarkov.

Part	Value	Library	Part	Value	Library
C1	10n	gm-caps-film-box	R1	2.2M	gm-resistors
C2	220p	gm-caps-film-box	R2	10K	gm-resistors
C3	100n	gm-caps-film-box	R3	470K	gm-resistors
C4	1n	gm-caps-film-box	R4	470K	gm-resistors
C5	220p	gm-caps-film-box	R5	47K	gm-resistors
C6	2.2u	gm-caps-electro-pol	R6	10K	gm-resistors
C7	2.2u	gm-caps-electro-pol	R7	10K	gm-resistors
C8	100u	gm-caps-electro-pol	R8	150K	gm-resistors
C9	100n	gm-caps-film-box	R9	47K	gm-resistors
C10	100u	gm-caps-electro-pol	R10	150	gm-resistors
D1	1N4148	gm-diodes	R11	47K	gm-resistors
D2	1N4148	gm-diodes	R12	47K	gm-resistors
D3	1N4001	gm-diodes	R13	47	gm-resistors
IC1	TL072P	gm-ics	GAIN	500K-RA	gm-pots
			LEVEL	100K-A	gm-pots

# Schematic

